



Associação Nacional dos Industriais de Prefabricação em Betão

CIRCULAR N.º 063/2015

Assunto: Concrete Perspectives - BIM Newsletter June 2015

Caros Associados,

Vimos por este meio enviar a *Newsletter* de junho de 2015 do BIM – European Federation for Precast Concrete, entidade da qual a ANIPB é associada.

Cumprimentos,

(Iris Vilela)

Lisboa, 02 de julho de 2015

R. D. Filipa de Vilhena, 9 - 2.º Dto. - 1000-134 LISBOA
(telefone) +351 21 799 53 70/4 - (fax) +351 21 796 40 56

(e-mail) anipb@netcabo.pt
(web) www.anipb.pt



CONCRETE PERSPECTIVES

June 2015

Internal News



BIBM General Assembly

On June 15-16, BIBM held its General Assembly in Leiden, Netherlands. BFBN, the Dutch member of BIBM, kindly organised a factory visit of Spanbeton (Consolis) and a city tour of the charming Leiden for the participants.

At the General Assembly meeting, the Russian Builders Confederation was a guest invitee.

Dr. Francesco Di Maio, from the Delft University of Technology gave a guest presentation on *C2CA: the development of advanced technologies for turning demolition concrete into clean aggregates and cement* (<http://www.c2ca.eu>).





Summer break

BIBM issues only one Newsletter for July- August, because the European Institutions are closed in August.

Construction sector

CERIB's Open Day in construction on 7 July 2015 - For further information please click [here](#) (only in French)

Concrete and clay industries advocating together for material-specific rules for drafting Environmental Product Declarations

Both the European Concrete Platform (ECP) and CERAMUNIE reacted in a form of independent letters to the draft publication of combined "*Product Category Rules (PCR) for bricks, blocks, tiles, flagstone of cement, and concrete, artificial stone and siliceous heart*", published by ENVIRONDEC for the International EPD system.

In its letter, ECP asked ENVIRONDEC to withdraw the draft PCR and underlined the need to have a PCR specifically made for concrete and concrete elements. In its explanation, ECP added that the multiplied PCRs covering the same products, or worse covering different product families, will only create confusion on the market.

As for the development of the concrete PCR, the concrete industry has chosen the way of standardisation (15804 compliant PCR).

It is crucial to follow the above mentioned principal in order to ensure that all program operators will be able to follow the same rules across Europe. The reaction of the concrete and clay industries is good example how to defend this principal and assure a successful business for the future.

[Letter of European Concrete Platform](#)
[Letter of CERAMUNIE](#)

BIBM drove both the masonry and concrete sectors to support investments in construction through the Junker's plan

BIBM has a leading role in the European Masonry Alliance and an active player in The Concrete Initiative, BIBM aims at having an equal part of the pie for the masonry and concrete industry.

Earlier this year, BIBM co-signed the joint letter which was co-signed in total 40 European and national organisations linked to the construction sector, sent it to the European





Commission in order to call the European executive to invest in the real estate and the build environment and to raise the awareness about the importance of the construction industry.

The main purpose of the letter was to present solutions for a sectorial strategy around five main axes: financial opportunities, job creation, sustainability, market and regulatory stability. This is in view of working with the new Commission and establishing a regular and long term dialogue to enable to respond, together, to the future challenges.

From an advocacy perspective, the purpose of the letter was to officially inform the European Commission that there is a lack of coherence and long-term strategic view when it comes to the several uncoordinated legislative initiatives affecting the construction sector. BIBM has echoed the importance of coherence and long-term view of the new European initiatives for a long time and now, in the framework of this letter the message became stronger and universal, backed by other European stakeholders.

With this letter, the Construction sector has demonstrated its coordinated wish to contribute to the European renaissance, with concrete solutions to the challenges of today. The sector is confident that the European decision makers will take their responsibilities and give a positive follow up.

Fire Safe Europe calls for EU common test methods for smoke toxicity

On 30 June, Fire Safe Europe organised a debate in the European Parliament (hosted by MEP Pavel Poc - S&D, Czech Republic) titled "The Killing Fumes in Building Fires, Why Should Smoke Toxicity from Building Materials be Tested?" MEP Poc welcomed the participants and confirmed his engagement for the case of fire safety. MEP Poc added that we have to know the performance of different materials in fire and the European Commission should not be afraid if this study will affect the market, because this is the point.

In the introduction, two experts talked about the effects of toxic smoke on victims underlying their serious concerns over the lack of EU legislation; while fire fighters presented their view, risking their own life for ours.

The programme of the event welcomed Mr Gwenole Cozigou (Director, Industrial Transformation and Advanced Value Chains DG GROW European Commission) who talked about the Smoke Toxicity form an EU perspective. He was rather reluctant to support the need for an EU approach and he said that current frameworks such as CPR and revision of Chemical Agents Directive and Carcinogens Directive could solve the problem. He appeared to put emphasis to avoid market distortions among construction materials and he defended the view of fire safety engineering, which emphasise the importance of the sequence of events (construction products will burn before or after the occupants left the building).





Other experts added to the debate that since the flashover time reduced from 25min to 2-3 min (1950 and 2015 respectively), the construction materials are also involved in the fire, therefore their performance is important, and it can make a difference for occupants who are in a burning building (not only the sequence of events counts).

In her closing remarks, MEP Christel Schaldemose (S&D, Denmark) sadly acknowledged the signal of the Commission who is not willing to act on the issue. MEP Schaldemose called for an EU action and announced that she will call for the preparation of an own initiative report on Fire Safety in the Internal Market Committee of the European Parliament. She stressed the significance of a holistic approach, data collection and update of the current testing methods.











Live from the European Union

Close the loop - Circular economy: boosting businesses, reducing waste

On 25th June, the European Commission held a conference titled “Close the loop - Circular economy: boosting businesses, reducing waste”. The conference had several parallel sessions and it aimed at collecting ideas what should be absolutely included in the new circular economy proposal which is expected to be issued at the end of 2015.

A new study was officially launched, prepared by Ellen MacArthur Foundation and McKinsey titled Growth Within: a circular economy vision for a competitive Europe. According to the report, the sectors mobility, food and built environment have the biggest potential to change our current economy into a circular one. As for the circular scenario for the built environment, the study confirms that it means smart urban planning and modular & sharable buildings (below picture are the slides of the presentation given by Ellen MacArthur Foundation and McKinsey.)

Future scenarios for three human needs

	Current development path	Circular scenario
 <p>Mobility</p>	<ul style="list-style-type: none"> Privately owned “super car” is dominant mode of transportation Congestion, pressure on resources 	 <ul style="list-style-type: none"> Multi-modal mobility Shared on-demand “super car” designed for durability
 <p>Food</p>	<ul style="list-style-type: none"> More efficient value chain Waste reduction No land rehabilitation Limited impact on health outcomes 	 <ul style="list-style-type: none"> Closed nutrients loops Preserved and rehabilitated natural capital Healthier food and diet
 <p>Built environment</p>	<ul style="list-style-type: none"> More efficient value chain Energy efficiency Increased sprawl/ land take 	 <ul style="list-style-type: none"> Smart urban planning leveraging unlocked land in cities Modular and shareable buildings





The picture below shows the main principles of the study.

Outline of a circular economy

PRINCIPLE 1

1

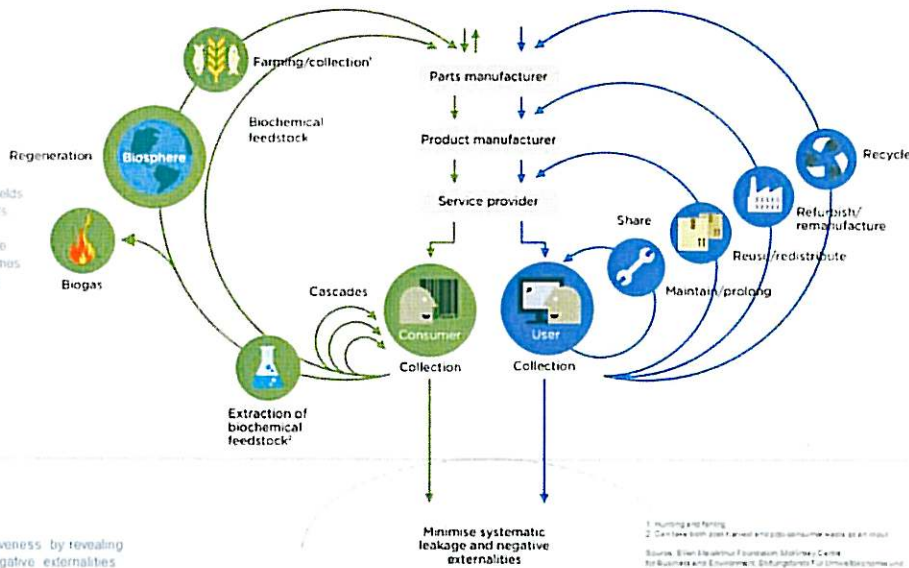
Preserve and enhance natural capital by controlling finite stocks, and balancing renewable resource flows. ReSOLVE levers: regenerate, virtualise, exchange.



PRINCIPLE 2

2

Optimise resource yields by circulating products, components and materials in use at the highest utility at all times in both technical and biological cycles. ReSOLVE levers: regenerate, share, optimise, loop.



PRINCIPLE 3

3

Foster system effectiveness by revealing and designing out negative externalities. All ReSOLVE levers.

Minimise systematic leakage and negative externalities

1. Hunting and fishing
2. Can take both soil based and soilless consumer waste as an input
Source: Ellen MacArthur Foundation, McKinsey Centre for Business and Environment, DLR/Institute for Umweltoekonomie und Nachhaltigkeit (UoE), Drawing from Braungart & McDonough (Cradle to Cradle) (2002)

As for the stakeholder discussions, **BUSINESSEUROPE**, **ORGALIME** (European Engineering Industries Association) and **UEAPME** (European Association of Craft, Small and Medium-sized Enterprises) were in the panel of the production phase session and their main messages were as follows:

1. There no one-size-fits for all. Product and sectoral specificities should be accounted
2. The proper implementation of the existing legislation should be ensured first (not to create new rules in the meantime)
3. Technical feasibility should be taken into account when setting objectives
4. "Translate" recyclability in the each sector (creating small circles)
5. Green Public Procurement is the right policy to trigger circular economy
6. Address the different interest of various parts of the value chain
7. No to exclude SMEs by creating administrative burden and apply Think Small First principle when drafting the new circular economy strategy
8. Environmental taxation
9. System approach (not product approach) and holistic view, whole life cycle analysis

The conference was broadcasted and can be watched on [this website](#).





Commission appoints new Secretary-General and reshuffles its senior management

On 24th June, the European Commission appointed a new Secretary General, Alexander Italianer who will take over the duties of Catherine Day from 1st September.

Furthermore, the commission also reshuffled its senior management and several current senior managers will be taking on new responsibilities.

[Press Release -Commission senior management from 1 September 2015](#)

Case Study: Balanced Office Building (Aachen)

The Balance Office Building is a four storey building with the particular feature that the designers are also the developers and users of the buildings, which enable the building to be optimised in an interdisciplinary manner.

It has been built based on the method of passive houses, with the aim to be cost-efficient (building and operation phase). The extensive floor plates without load-bearing interior walls allow flexible subdivision.

The building won the award of German Association of Architects (BDA Aachen).

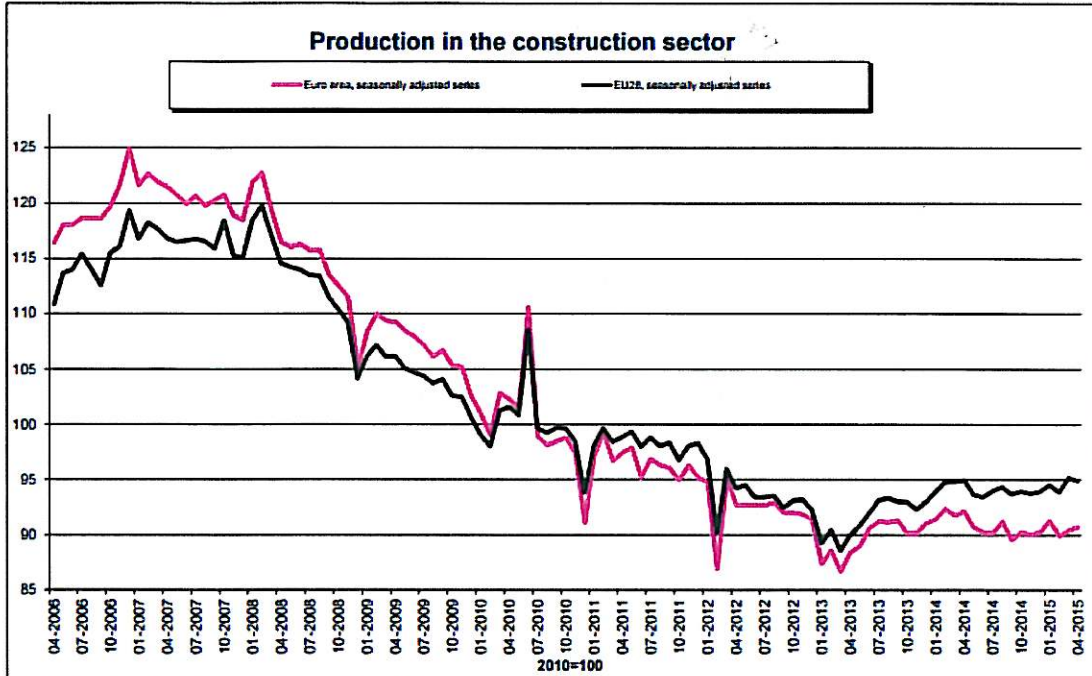
For further information, the full report is available on the link below.

[Case Study: Balance Office Building](#)



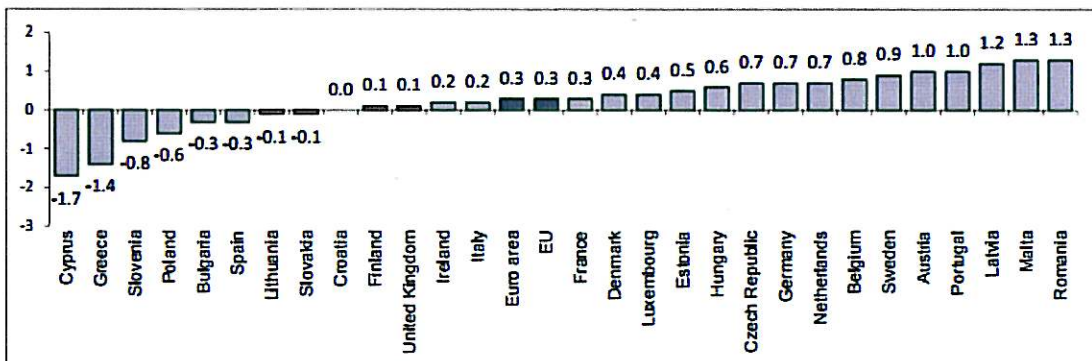


News in brief



Graph 1- Production in Construction (pink -Euro Area, Black EU28)

According to first estimates from Eurostat, the statistical office of the European Union, in April 2015 compared with March 2015, the seasonally adjusted production in the construction sector increased by 0.3% in the euro area (EA19) and decreased by 0.3% in the EU28.



Graph 2 - Annual inflation rates (%) in May 2015, in ascending order

Annual inflation was 0.3% in May 2015 both in the Euro area and in EU 28 (up from 0.0% in April).

*Data for Austria is provisional





AGENDA

JULY

8 July 2015
EMA meeting
Brussels, Belgium

AUGUST

24 August 2015
PCR for concrete - Editorial Panel
Brussels, Belgium

SEPTEMBER

8 September 2015
Board meeting
Bilbao, Spain

15 September 2015
BIBM Technical Commission
Brussels, Belgium

16 September 2015
BIBM Technical Commission
Brussels, Belgium

OCTOBER

6 October 2015
ECP TF Sustainable Concrete
Brussels, Belgium

7 October 2015
Environmental Commission
Brussels, Belgium

14 October 2015
CPE TG CPR implementation
Brussels, Belgium

20 October 2015
Communication Commission
Brussels, Belgium

To the Newsletter of Construction Products Europe (former CEPMC), please follow [this link](#).

To read the Newsletter of CEMBUREAU, please follow [this link](#). You can also subscribe directly following this link <http://www.cembureau.eu/newsletter/subscriptions>.

To read the Quarterly Newsletter of The Concrete Initiative, please follow [this link](#).

List of Acronyms

CPE - Construction Product Europe
CPR - Construction Products Regulation
ECP - European Concrete Platform
EMA - European Masonry Alliance
JRC - Joint Research Centre of the European Commission
PCR - Product Category Rules
TF - Task Force
AhG - Ad-hoc Group

