



## Construction sector

---

- On 22 February, **Construction Products Europe** launched the [Smart CE-marking](#) agreement. The initiative aims to develop a harmonised digital format for technical information of construction products.

Smart CE marking is included in the official Work Programme of the European Committee for Standardisation.



- On 23 February, the **Concrete Initiative** held an internal workshop on “Positioning the concrete and cement sector in the field of sustainability assessment”. The aim of the workshop was to understand and compare the different EU initiatives (Standardisation, Product Environmental Foot-printing (PEF) and LEVELs) and brainstorm the participants about the targets of the sector for a competition on a level playing field and discuss the way forward in achieving the objectives.





- On 27 February, the Industry4Europe initiative handed over the Joint Reaction Paper to European Parliament President Antonio Tajani, former Commissioner for Industry and Trade. The BIBM Secretariat having been involved in the exercise together with more than 100 industrial sectors, a representative from BIBM was part of the group handing over the document.





Live from the European Union

---

### **The General Data Protection Regulation enters into force**

The [General Data Protection Regulation \(EU\) 2016/679](#), referred to simply as the “GDPR”, will enter into force on 25 May 2018.

It concerns the protection of natural persons regarding the processing of personal data and on the free movement of this data and it aims to strengthen and unify data protection for all individuals within the European Union.

It doesn't apply to the processing of personal data of deceased persons or of legal entities.

The rules don't apply to data processed by an individual for purely personal reasons or for activities carried out in one's home, provided there is no connection to a professional or commercial activity. When an individual uses personal data outside the personal sphere, for socio-cultural or financial activities, for example, then the data protection law has to be respected.

BIBM will adapt to the changes in due course and is the process of informing its Members about the changes to be done.

### **EU Industry Days**

On 22-23 February, the EU industry days took place where the Industry4Europe initiative were represented by giving a presentation jointly with the European Committee of the Regions, emphasising that regions play a key role to help place-based industry to face global challenges.





Also, the first ever meeting of the new High Level Industrial Roundtable “Industry 2030” took place in the framework of the Industry Days, where Commissioners Elżbieta Bieńkowska (Internal Market, Industry, Entrepreneurship and SMEs) and Jyrki Katainen (jobs, Growth, Investment and Competitiveness) were also present.

The joint campaign of the Industry4Europe was equally present and the EU priorities were confirmed: skills, artificial intelligence, circular economy, digitalisation and R&D.



Commissioners: Elżbieta Bieńkowska (Internal Market, Industry, Entrepreneurship and SMEs) and Jyrki Katainen (jobs, Growth, Investment and Competitiveness)

Furthermore, for the first time, four organisations of major industries ([CECE](#), [Construction Products Europe](#), [FIEC](#) and [EBC](#)) held an event on [Digitalisation in the construction sector](#) during the two-day Industry Days.

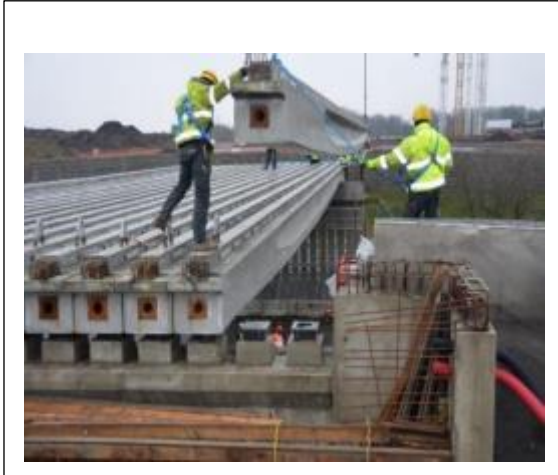


National Award Winner Project

---

## Belgium - Winner in category Precast In Infrastructure

### Bridge to MontLegia hospital in Liege (CHC Bridge)



Photos: © Greisch Office

Architects: [Greisch Design Office](#)

Prefabricator: Ergon nv

Entrepreneur: AM Franki - De Nul - Eloy

Design Office: Greisch Design Office

Client / Adjudicator: CHC (Chrétien Hospital Center) - SPW Liège Roads Directorate

The bridge consists of two spans of 33 meters each side with 18 prefabricated beams, for a total width of 11 meters. The beams are prestressed and support their own weight. Longitudinal and transversal post-stressing was applied on site to resist the overload of traffic.

The implementation of the upper flange of the beams makes the project special. The shape of the sole is in effect designed that only the longitudinal key was poured on site after making a seal between beams. In this way, moulding is not necessary. Once the transversal prestress was applied, the upper soles act as slab of decking. This method allows a very quick work.

Thanks to the quick assembly of prefabricated concrete, traffic was barely disturbed on one of the main arteries of access to Liege.

#### The opinion of the jury

The jury was seduced by the very thin design of the bridge combined with a precise design of bending. The bridge shows the essence of prefabrication: precise, high-quality work with beautiful aesthetics.







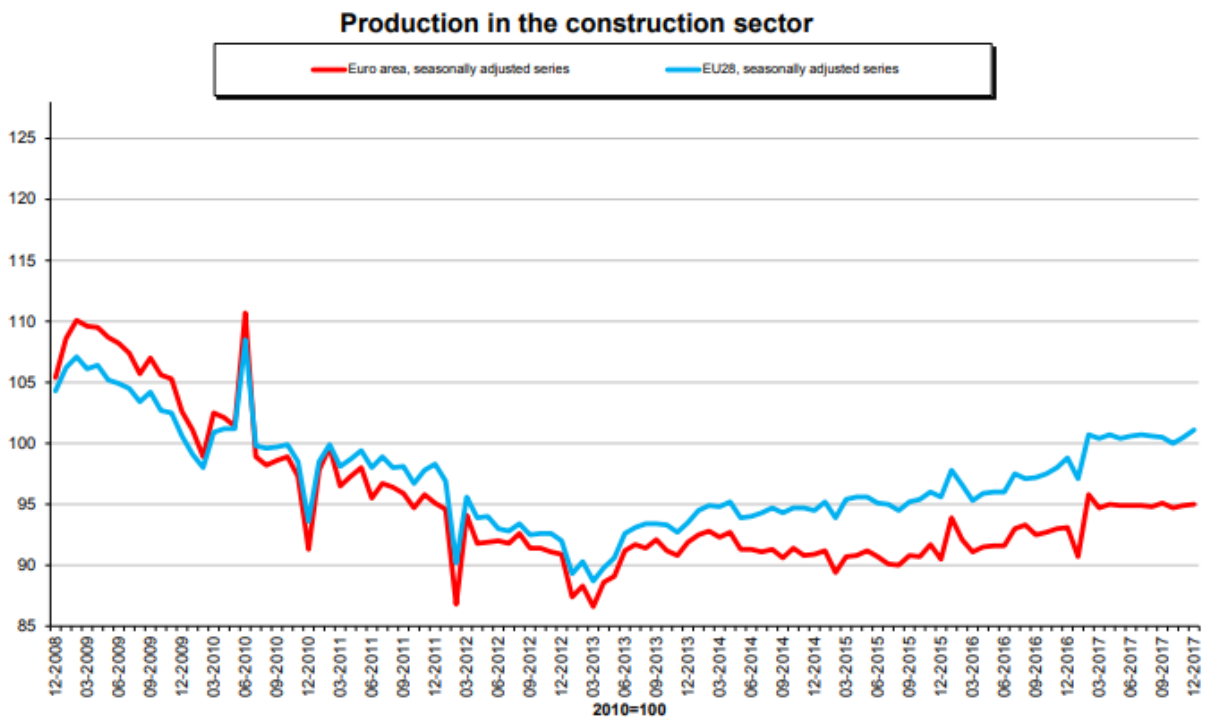


The jury also highlighted the great precision that this project has requested in the combination of prestressing and the prefabrication process. It also rewarded the aesthetics, elegance and architecture of the bridge which was made possible using prefabricated concrete.

The speed of execution is also a characteristic that the jury wishes to reward. This allowed reduce disturbance to traffic and decrease nuisance.



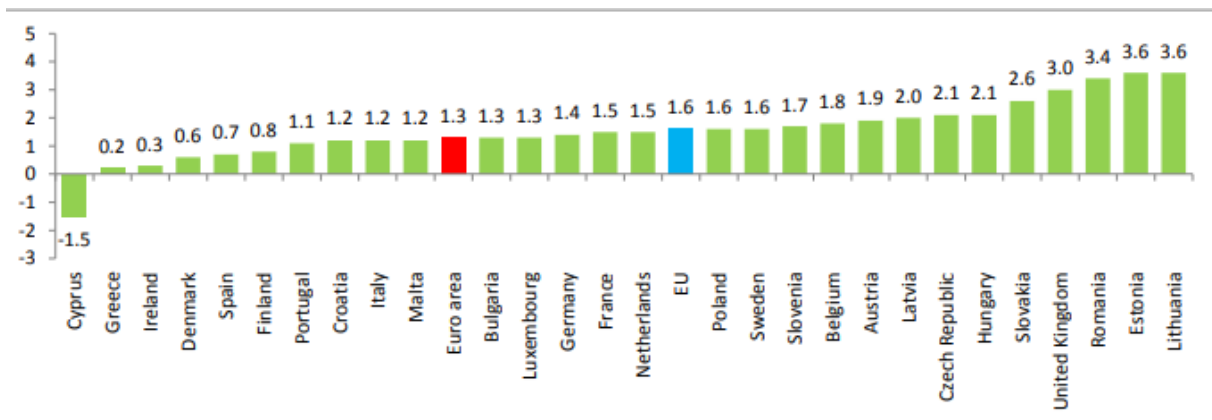
News in brief



[Graph 1- Production in Construction](#) (red - Euro Area, blue - EU28)

In December 2017 compared with October 2017, seasonally adjusted production in the construction sector increased by 0.1% in the euro area (EA19) and by 0.6% in the EU28, according to first estimates from Eurostat, the statistical office of the European Union.

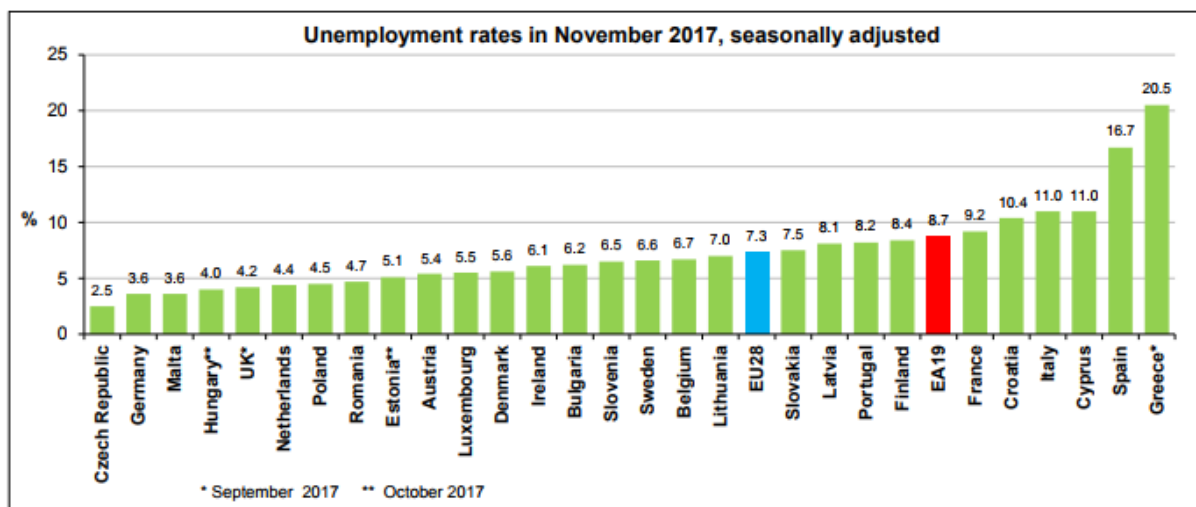
Among Member States for which data are available, the highest increases in production in construction were recorded in Romania (+4.5%), France (+4.2%) and Hungary (+3.9%), and the largest decreases in Slovakia (-5.5%), Spain (-4.4%) and Bulgaria (-3.0%).



**Graph 2 - Annual inflation rates (%) in January 2018, in ascending order**

Euro area annual inflation was 1.3% in January 2018, while the European Union annual inflation was 1.8%.

The lowest annual rates were registered in Cyprus (-1.5%), Greece (0.2%) and Ireland (0.3%). The highest annual rates were recorded in Lithuania and Estonia (both 3.6%) and Romania (3.4%).



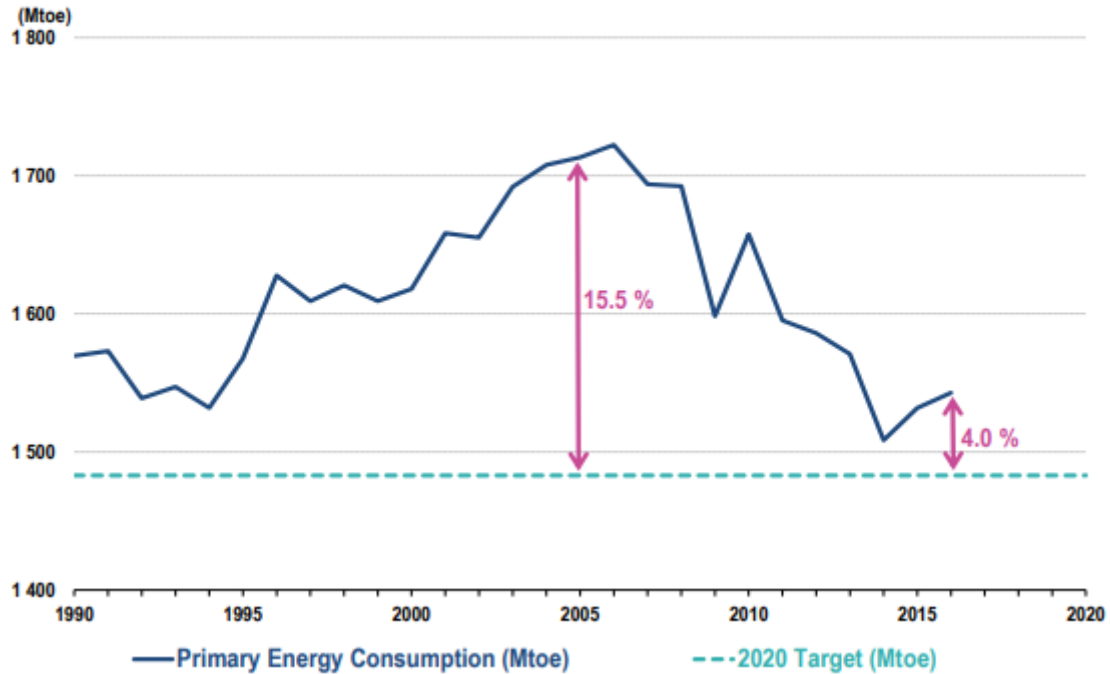
**Graph 3: Unemployment rate**

The euro area (EA19) seasonally-adjusted unemployment rate was 8.7% in December 2017. This is the lowest rate recorded in the euro area since January 2009. The EU28 unemployment rate was 7.3% in November 2017, which remains the lowest rate recorded in the EU28 since October 2008.

Among the Member States, the lowest unemployment rates in December 2017 were recorded in the Czech Republic (2.3%), Malta and Germany (both 3.6%). The highest unemployment rates were observed in Greece (20.7% in October 2017) and Spain (16.4%).



**Primary energy consumption in the EU, 2016**  
(in million tonnes of oil equivalent, Mtoe)



[Graph 4: Energy Consumption 2016](#) - 4% gap for primary energy consumption and 2% gap for final energy consumption targets

The European Union (EU) has committed itself to reducing energy consumption by 20% by 2020 compared to projections. In 2016, primary energy consumption in the EU was 4% off the efficiency target. Since 1990, the first year for which data are available, the consumption has reduced by 1.7%.





## Agenda

---

### MARCH

6 March 2018

**BIBM Board meeting**  
Brussels, Belgium

8 March 2018

**FSEU Task Force**  
Brussels, Belgium

9 March 2018

**ECP-TF Sustainable Concrete**  
Confcall

14 March 2018

**CEN/TC 229/WG 1**  
Brussels, Belgium

15 March 2018

**BIBM Environment Commission**  
Brussels, Belgium

16 March 2018

**Wastewater engineering group**  
Brussels, Belgium

22 March 2018

**EMA meeting (fire)**  
Brussels, Belgium

27 March 2018

**CPE CPR WG**  
Brussels, Belgium

28 March 2018

**AhG Concrete Initiative**  
Brussels, Belgium

### APRIL

17 April 2018

**Communication Commission**  
Brussels, Belgium

23-25 April 2018

**PEF Workshop**  
Brussels, Belgium

26-27 April 2018

**CEN/TC 104/TG 20**  
Paris, France

### MAY

2 May 2018

**BIBM Technical Commission**  
Brussels, Belgium

15 May 2018

**BIBM Board meeting**  
Brussels, Belgium

24 May 2018

**Research projects - Green Week**  
**Workshop**  
Brussels, Belgium

24-25 May 2018

**CEN/TC 229**  
Stockholm, Sweden



To the Newsletter of Construction Products Europe please follow [this link](#).

FIEC's January Newsletter is available at [this link](#).

To read the Newsletter of CEMBUREAU, please follow [this link](#). You can also subscribe directly following this link <http://www.cembureau.eu/newsletter/subscriptions>.

To read the Quarterly Newsletter of The Concrete Initiative, please follow [this link](#).

**List of Acronyms:**

CPE - Construction Product Europe

CSC - Concrete Sustainability Council

DG GROW - Directorate-General for Internal Market, Industry, Entrepreneurship and SMEs

ECP - European Concrete Platform

EMA - European Masonry Alliance

IPHA - International Pre-stressed Hollowcore Association

TF - Task Force